



# Update on Clinical Parameters of Prostate Cancer at the University College Hospital, Ibadan Nigeria

Authors:

**Olufemi J. Ogunbiyi**,<sup>1</sup> Akinpelumi Adebisi,<sup>2</sup> Sebastian Omenai,<sup>1</sup> David Mashor<sup>1</sup>

Author's Affiliations

Departments of Pathology<sup>1</sup> and Community Medicine<sup>2</sup>

University College Hospital, Ibadan, NIGERIA

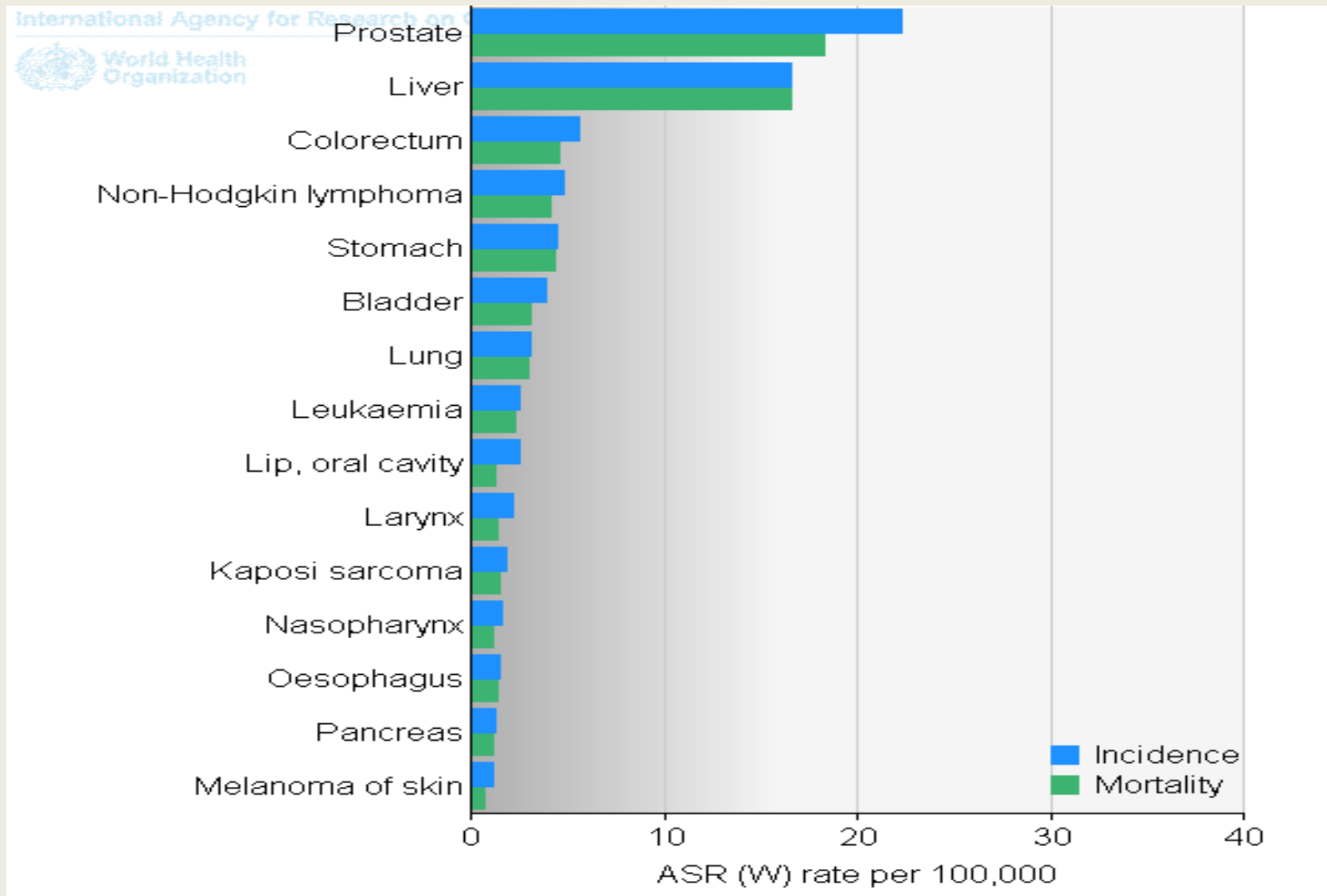
Greetings From Ibadan



# Conflict of Interest

- None

# What we know of prostate cancer in West Africa?

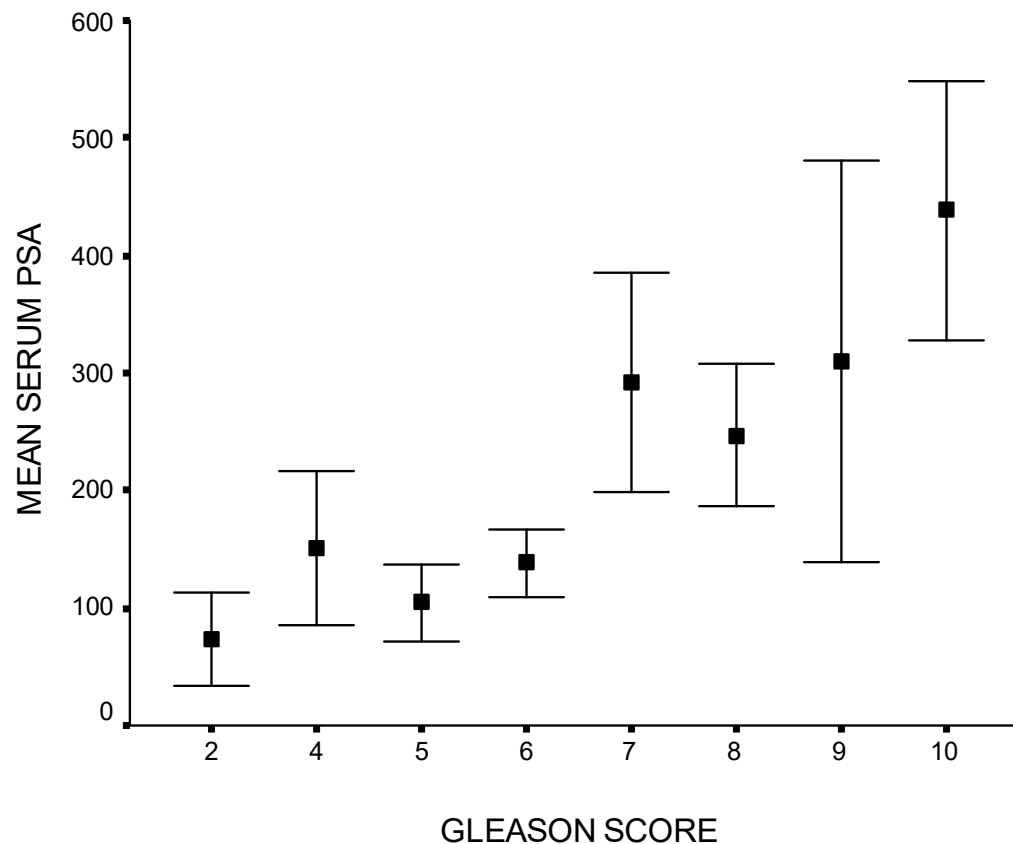


## Nigerian studies from the North, Southwest, and Southeast.

Studies have shown an increasing incidence.

- In one study, there was a 7.7-fold increase over a 10-year period.
- Prostate cancer accounts for anything between 6 and 12 % of total cancers in these centres.
- The average ages from the different subpopulations is in the 7<sup>th</sup> decade.
- In all sites, patients present in late stages of disease, The histological grades were predominantly high, and the patients tended to die within 2 – 3 years

Serum PSA levels ranged from 10-940.5 mg/L, with a mean value of  $207.9 \pm 221.3$  mg/L.



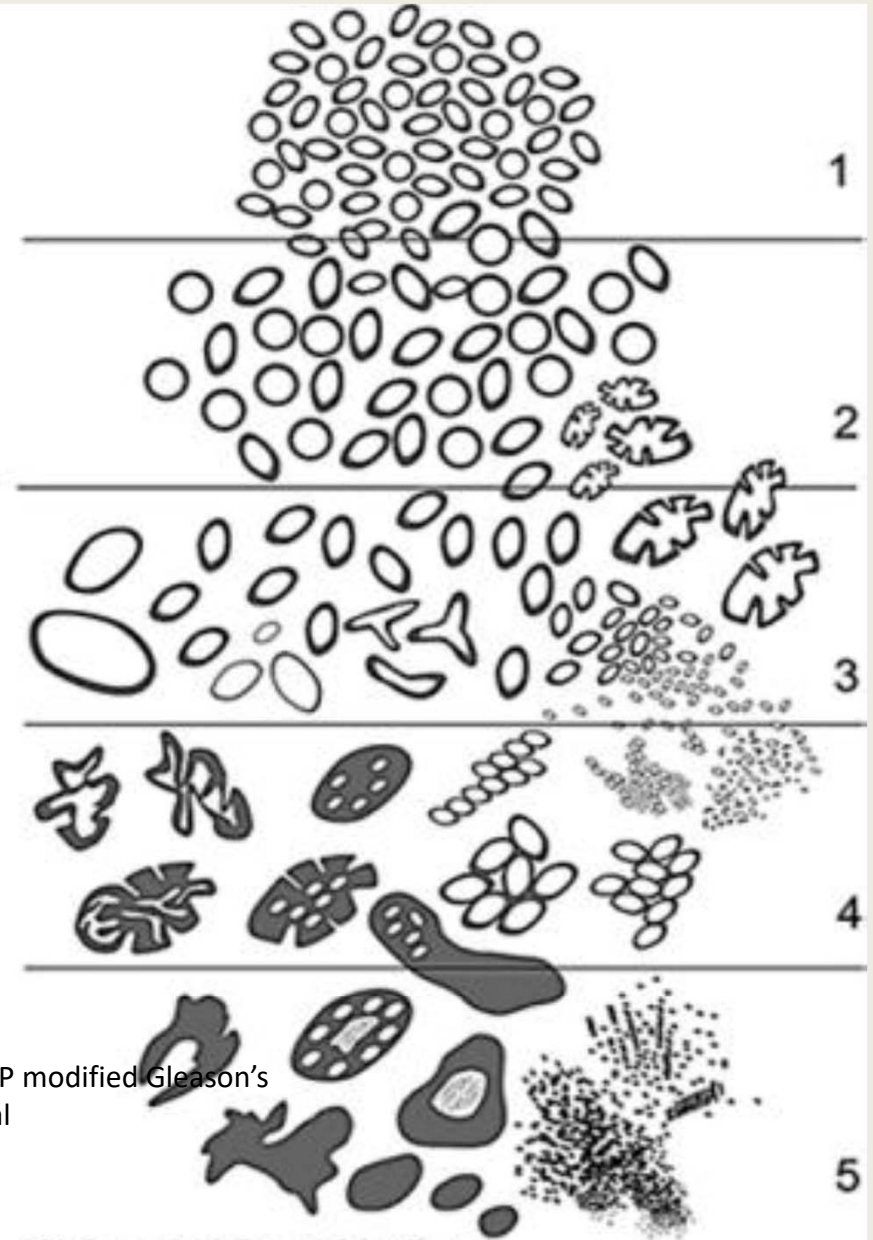
# HISTOLOGIC PATTERNS OF PROSTATIC ADENOCARCINOMA



D.F. Gleason, MD

Original Gleason's

The 2014 ISUP modified Gleason's  
Epstein, J et al



Weinzerl | Visual Media

© 2015 Indiana University



## Sample of a report incorporating both Gleason and grade group system

### A. Apex, right lateral:

- Prostatic adenocarcinoma, Gleason score  $3 + 3 = 6$  (Grade Group 1) involving 70% of one (1) core.
- Length of cancer is 7 mm.

### B. Mid, right lateral:

- Benign prostate tissue.

### C. Base, right lateral:

- Prostatic adenocarcinoma, Gleason score  $4 + 3 = 7$  (Grade Group 3) involving 70% of one (1) core.
- Length of cancer is 3 mm.
- Percentage of pattern 4 = 70%.

### D. etc

### Diagnostic comment:

Gleason scores can be grouped and range from Grade Group 1 (most favorable) to Grade Group 5 (least favorable).

References: *BJU Int.* 2013;111:753–760 and *Eur Urol.* Published online ahead of print July 9, 2015.



## THE NEW CONTEMPORARY GRADING SYSTEM

- Gleason scores 2 to 5 are currently no longer assigned and certain patterns that Gleason defined as a score of 6 are now graded as 7.
- This study was conducted to determine the effect of the revised International Society of urologic Pathology (ISUP) system for grading on the grade of prostatic carcinoma among Nigerians

# Study Objectives

- To determine any changes in histological grades of prostate carcinomas seen in our population compared to previous studies using the IUSP grading system
- To compare the age of patients in this present study with previous studies in our population

## Method

- A prospective study of prostate cancer cases seen at the University College Hospital Ibadan as part of a multicenter prospective study of prostate cancer genetics
- Grading and scoring followed the IUSP system and cases were classified in Grade groups
- Gleason grades less than 3 and scores less than 6 were not assigned
- The Prostatic Specific Antigen levels as well as the average tumour volume in the biopsy specimen were captured
- IRB approval was obtained from the UCH/UI ethical review board

# Results

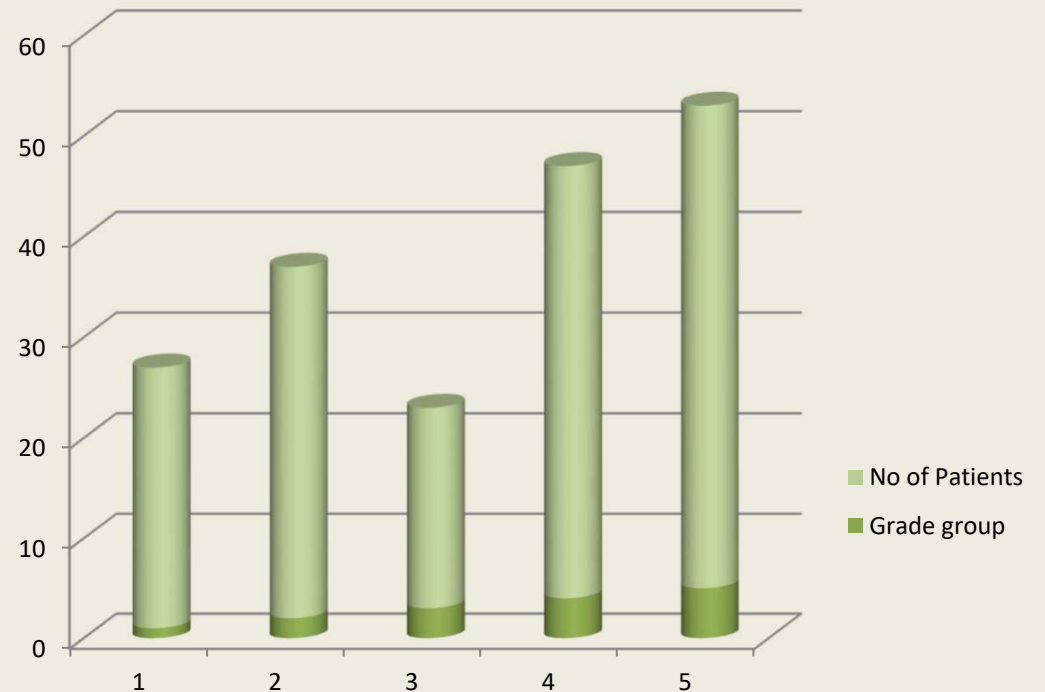
172 patients were seen.

Patients' ages ranged from 47 years to 86 years with peak age incidence in the 7<sup>th</sup> decade

Gleason grade	N0. of Cases	Age (years)	PSA range (ng/ml)	ATV (%)
3+3	26	62-85	2.7-1111	42.47
3+4	35	55-84	14.20-20870	39.33
4+3	20	55-84	6.1-22134	44.38
3+5	4	55-84	93.24-193.26	56.50
4+4	25	52-82	29.03-9112	25.50
5+3	14	58-82	29.50-236	59.00
4+5	9	63-80	58.91-1050	42.27
5+4	26	47-86	15.01-8054	52.87
5+5	13	52-70	15.90-895.10	36.82
<b>Total</b>	<b>172</b>	<b>47-86</b>	<b>2.70-22134</b>	<b>25.50-59.00</b>

# Results

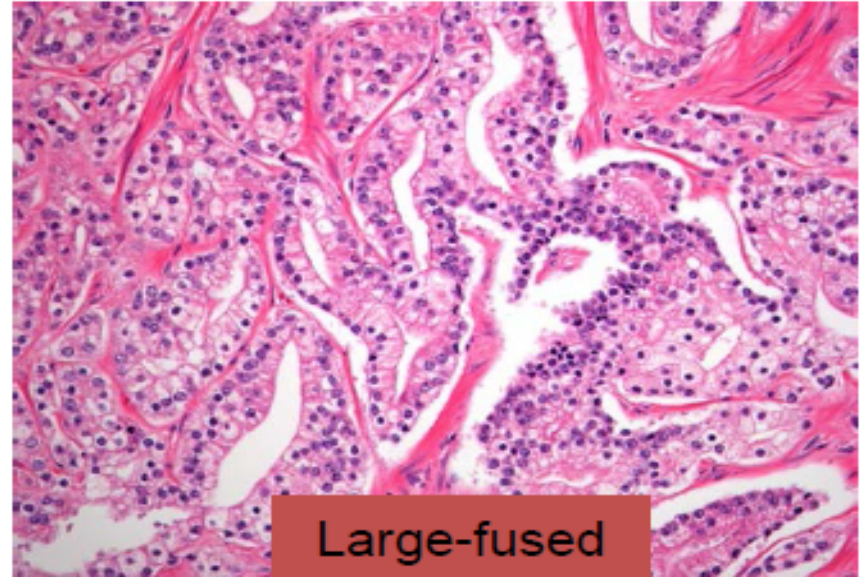
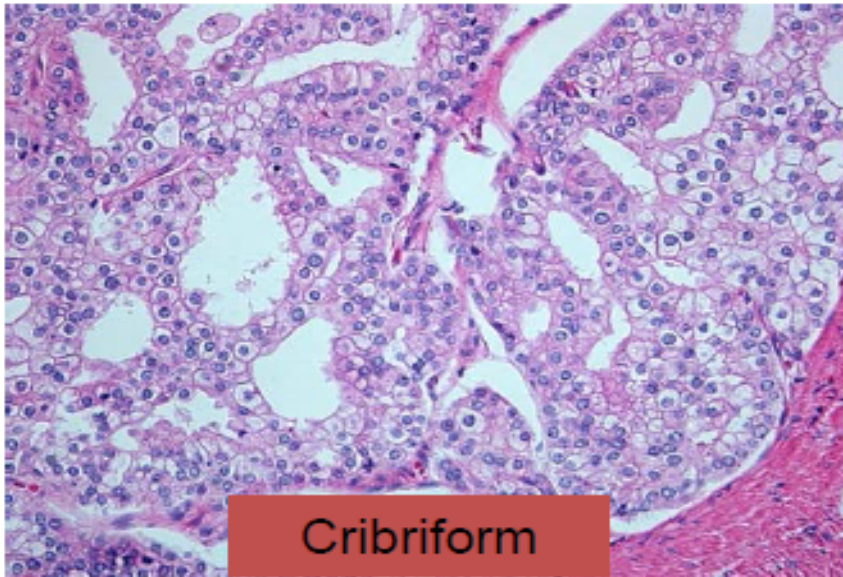
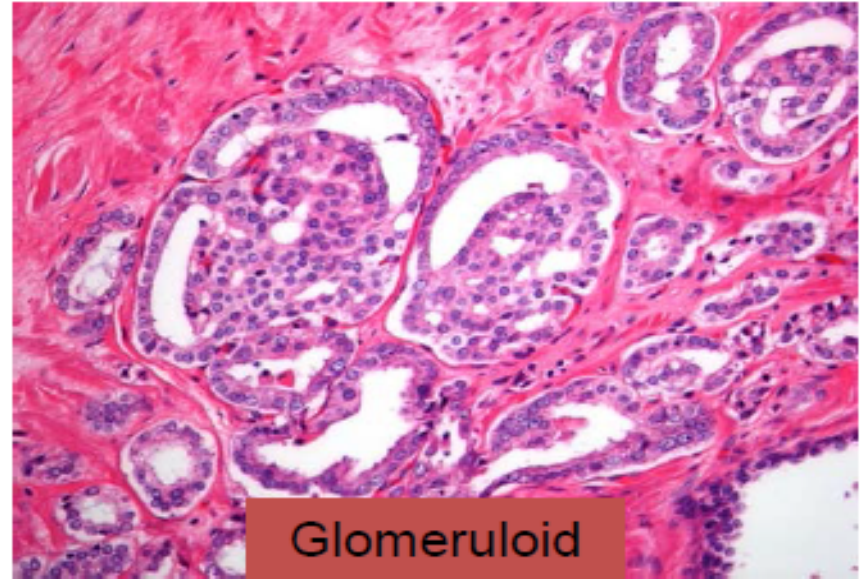
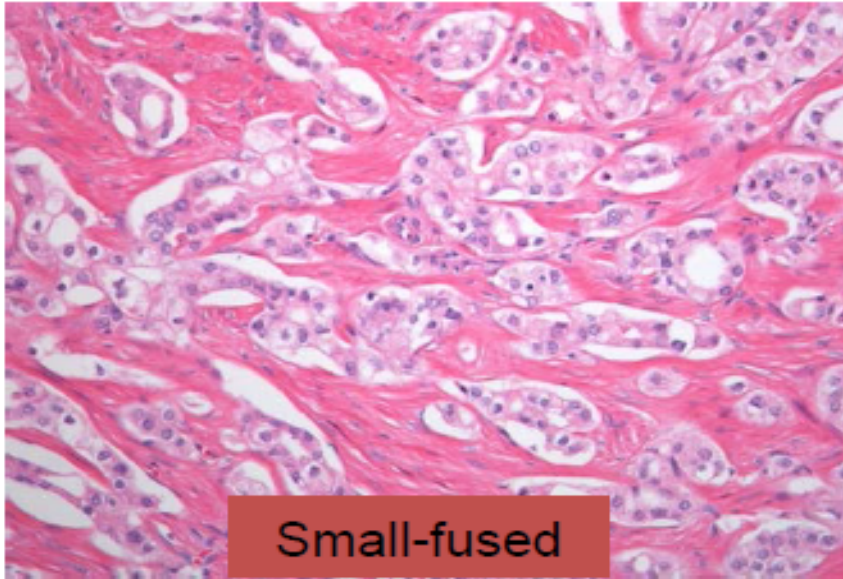
- Most were in Grade group 5 (9-10) (28%).
- Grade group 3 (4+3=7) had the lowest number of patients



**Figure 1: Number of patients according to grade groups**



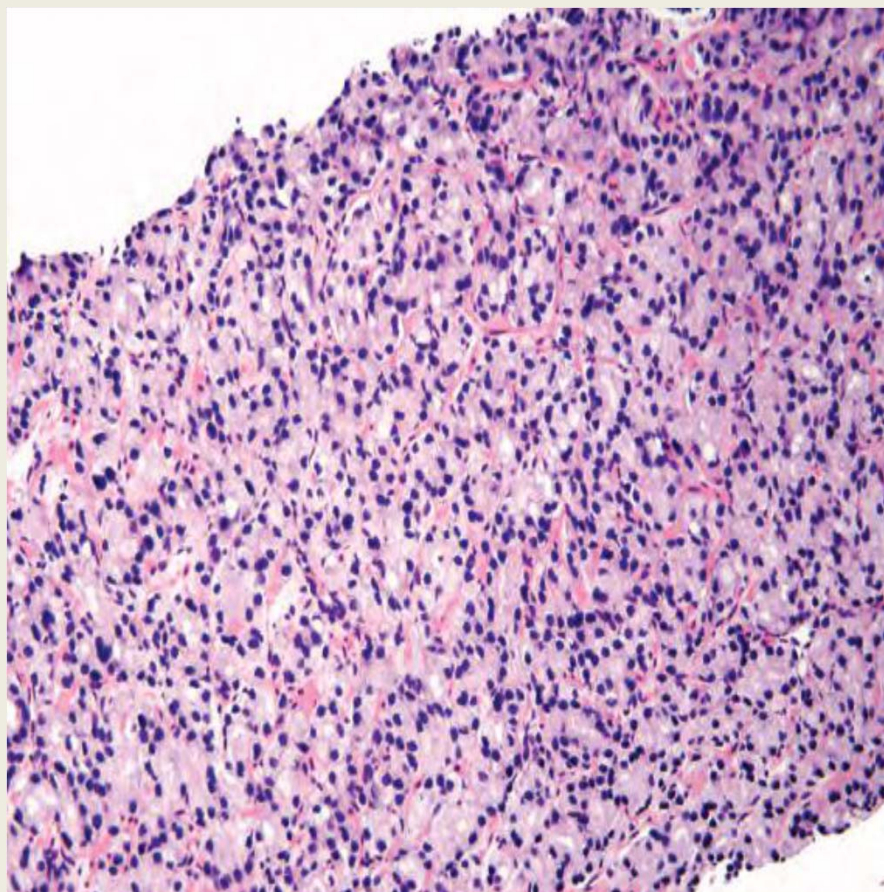
# GLEASON PATTERN 4



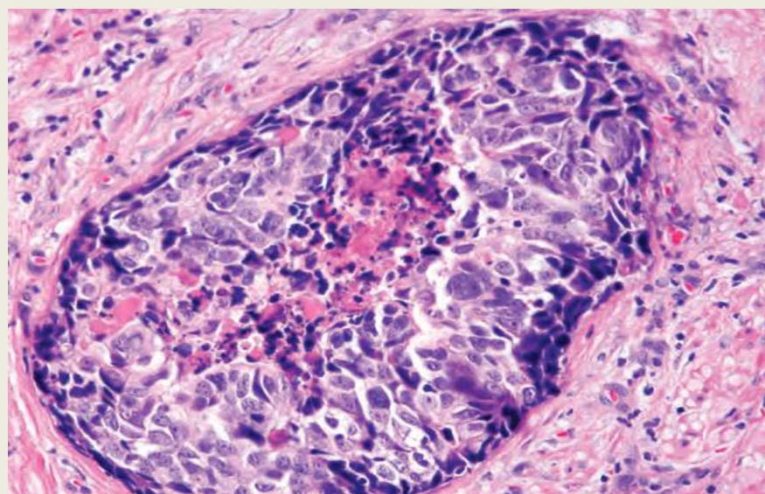
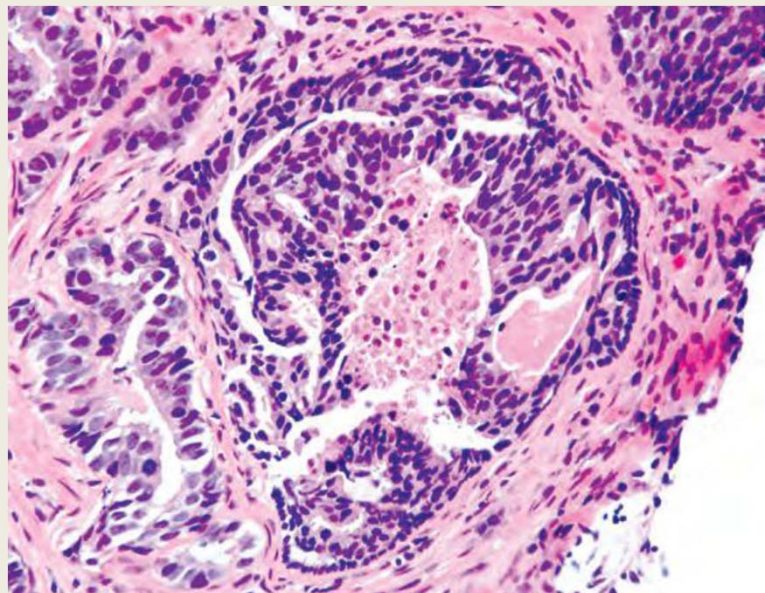


# GLEASON PATTERN 5

**Sheet of cells with vague attempts at gland formation**



**Cribriform and solid nest with comedo-necrosis**





## KEY POINTS

- Preponderant high grade prostatic adenocarcinomas remains among Nigerians in contrast to the findings elsewhere, especially of the CaPSURE study in the United States of America<sup>4</sup>. This portends a worse prognosis for our population.
- Remarkably high PSA values are recorded in our environment
- There is no difference in age of occurrence of this disease compared to previous studies<sup>5</sup> despite the revision of the grading system
- The lack of linear relationship between PSA level and tumour volume or grade cannot be readily explained.



UNIVERSITY COLLEGE HOSPITAL, IBADAN

# References

- 1. Akinremi TO, Ogo CN, Olutunde AO. Review of Prostate cancer Research in Nigeria. Infectious Agents and Cancer 2011, 6(Suppl 2):S8
- 2. Odedina FT, Akinremi TO, Chinegwundoh F, Roberts R, Yu D, Reams RR. Prostate cancer disparities in Black men of African descent: a comparative literature review of prostate cancer burden among Black men in the United States, Caribbean, United Kingdom, and West Africa. Infectious Agents and Cancer 2009, 4(Suppl 1):S2
- 3. Epstein JI, Egevad L, Amin M, Delahunt B, Srigley J, Humphrey P: The 2014 International Society of Urological Pathology (ISUP) Consensus Conference on Gleason Grading of Prostatic Carcinoma: Definition of Grading Patterns and Proposal for a New Grading System. American Journal of Surgical Pathology, 2000;40(2):244-252.
- 4. Leapman MS, Cowan JE, Simko J, Roberge G, Stohr BA, Carroll PR, Cooperberg MR. Application of a Prognostic Gleason Grade Grouping System to Assess Distant Prostate Cancer Outcomes. European Urology, 2017;71:750-759
- 5. Ogunbiyi JO, Shittu BO. Increased incidence of Prostate Cancer in Nigerians. J Natl Med Assoc. 1999;91 :159-164.

THANK

YOU

FOR

LISTENING